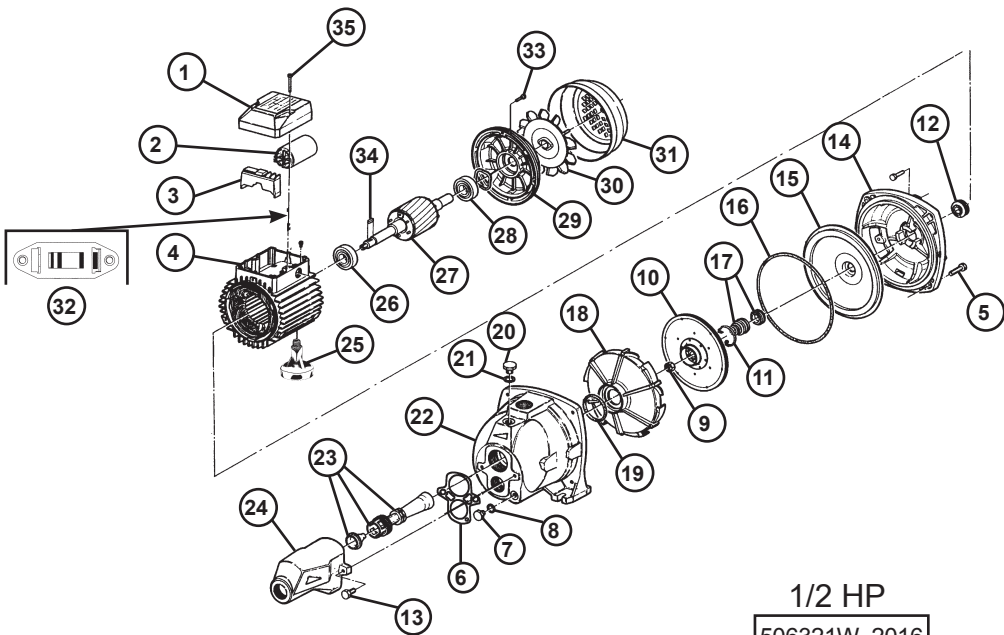


REPAIR PARTS

REF ITEM	DESCRIPTION	REF ITEM	DESCRIPTION
1	506014 Junction box cover	18	506317 Diffuser
2	506629 Motor capacitor	19	506298 Diffuser "O" ring
3	506065 Capacitor junction box	20	506300 Priming plug
4	506030W Stator 1/2HP	21	506400 Priming plug washer
4	506285W Stator 3/4HP	22	506286 C.I. pump body
5	506297 Pump body cap screw	23	506308W "O" ring, nozzle and venturi
6	506307 Ejector gasket	24	506306.1 Ejector body (only)
7	506299 Drain plug	25	506312 Motor foot
8	506315 Drain plug washer	26	506031 Pump side motor bearing
9	506022 Impeller nut	27	506314W Rotor 1/2HP
10	506294P Impeller 1/2HP	27	506284W Rotor 3/4HP
10	506292P Impeller 3/4HP	28	506032 Fan side motor bearing
11	506411 Seal snap ring	29	506296 Motor end bell
12	506026 Sand slinger	30	506017W Motor fan
13	506415 Ejector body screws (4)	31	506016 Fan cover
14	506289 Pump bracket	32	506094 115/230V selector
15	506287 Seal plate	33	506430 Screws (3)
16	506288 Pump body "O" ring	34	506318W Impeller shaft key
17	506637 Mechanical seal	35	506419 Cover bolt



Repair parts may be ordered your authorized point of sale of from
BURCAM PUMPS