

2190 Dagenais Blvd. West
LAVAL (QUEBEC)
CANADA
H7L 5X9

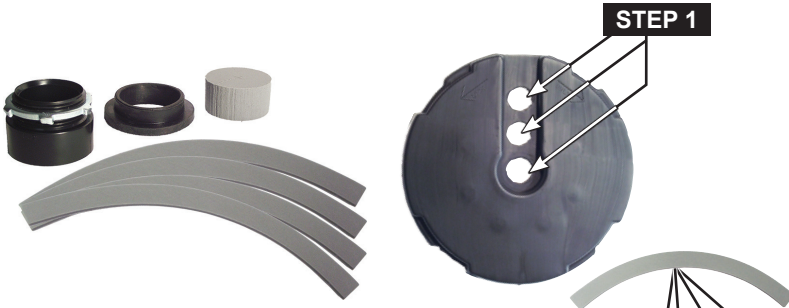
TEL: 514.337.4415
FAX: 514.337.4029
info@burcam.com

INSTRUCTIONS

MODEL

350558S

SEALED BASIN INSTALLATION INSTRUCTIONS



STEP 1 Remove the three pre-molded knockouts from the sump basin lid.

STEP 2 Stick the 4 part gasket on the lip of the sump basin.

STEP 3 Fix the 1 1/2" ABS vent connector in the side hole using the lock nut.

STEP 4 Place the pump in the liner and position it so that the pump discharge is centered. Screw the discharge pipe (1 1/2" ABS/DWV) to the pump so it extends 30 cm (12") or more beyond the top of the basin.

STEP 5 Insert the pump power cord and the float cord into the middle hole and seal using the wire grommet.

STEP 6 Drop the 1 1/2" pipe seal onto the pipe to make a tight seal with the lid.

STEP 7 Connect your discharge line to the pump discharge pipe using an union to allow easy servicing at a later date. Then connect the vent line to the vent connector with another union.

