



WWW.BURCAM.COM

2190 Boul. Dagenais West  
LAVAL (QUEBEC)  
CANADA  
H7L 5X9

TEL: 514.337.4415  
FAX: 514.337.4029

info@burcam.com

# INSTALLATION INSTRUCTIONS

## MODEL 300910 FOUNTAIN & WATERFALLS PUMP

Please read these instructions carefully. **Failure** to comply to instructions and **designed** operation of this system, may **void** the warranty.

Your pump has been carefully packaged at the factory to prevent damage during shipping. However, occasional damage may occur due to rough handling. **Carefully inspect your pump** for damages that could cause failures. Report any damage to your carrier or your point of purchase.



# SAFETY INSTRUCTIONS:

This fine pump that you have just purchased is designed from the latest in material and workmanship.

Before installation and operation, we recommend the following procedures:

- A** CHECK WITH YOUR LOCAL ELECTRICAL AND PLUMBING CODES TO ENSURE YOU COMPLY WITH THE REGULATIONS. THESE CODES HAVE BEEN DESIGNED WITH YOUR SAFETY IN MIND. BE SURE YOU COMPLY WITH THEM.
- B** WE RECOMMEND THAT A SEPARATE CIRCUIT BE LEAD FROM THE HOME ELECTRICAL DISTRIBUTION PANEL PROPERLY PROTECTED WITH A FUSE OR A CIRCUIT BREAKER. WE ALSO RECOMMEND THAT A GROUND FAULT CIRCUIT BE USED. CONSULT A LICENSED ELECTRICIAN FOR ALL WIRING.
- C** THE GROUND TERMINAL ON THE THREE PRONG PLUGS SHOULD NEVER BE REMOVED. THEY ARE SUPPLIED AND DESIGNED FOR YOUR PROTECTION.
- D** NEVER MAKE ADJUSTMENTS TO ANY ELECTRICAL APPLIANCE OR PRODUCT WITH THE POWER CONNECTED. DO NOT ONLY UNSCREW THE FUSE OR TRIP THE BREAKER, REMOVE THE POWER PLUG FROM THE RECEPTACLE.

## APPLICATION

- This submersible utility pump is designed for a permanent application at home.
- May also be used for waterfall, fountain.
- May also be used for a portable application like water transfer.
- CAPACITY:

5'	4000	USGPH	1.5m	15100	LPH
10'	3400	USGPH	3.0m	12900	LPH
15'	2600	USGPH	4.5m	9800	LPH
20'	1200	USGPH	6.0m	4500	LPH

FRICITION LOSS IN  
PIPE NOT INCLUDED

## FEATURES

- Non corrosive material.
- Stainless steel mechanical rotary seal.
- Thermal and overload protection.
- 1/2HP, 115VAC, 60Hz, 4.0 A, (8.0 A when start).

### NOTICE

This unit is not designed for applications involving salt water or brine .  
Use with salt water or brine will void warranty.

# INSTRUCTION STEPS

**WARNING : NEVER RUN THE PUMP DRY**

**STEP 1** Install the pump at the appropriate place to transfer or at the source for waterfall and / or fountain.

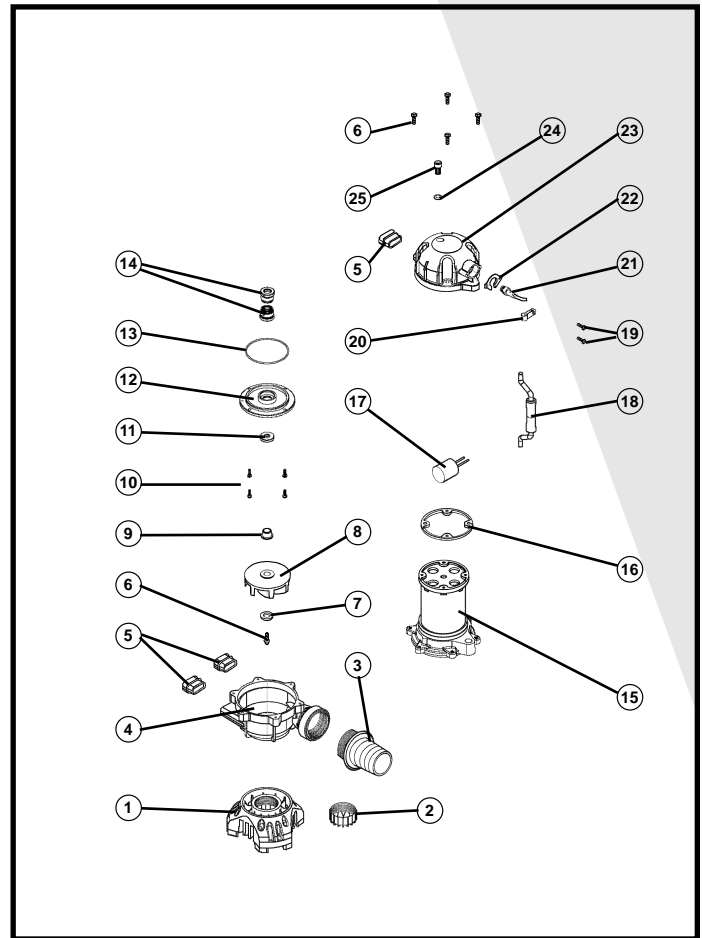
**STEP 2** Run a 2" pipe to the desired discharge point.

**STEP 3** Make sure that sand, rocks or any debris does not clog the suction screen.

## REPAIR PARTS

### MODEL 300910 Fountain pump

REF	#	DESCRIPTION
1	310111	Strainer / vertical support
2	310112	Stainer
3	310113	Discharge adaptor
4	310114	Pump casing
5	310115	Foot (3)
6	310116	Screws (top cover & Impeller) (4)
7	310117	Impeller washer
8	310118	Impeller
9	310119	Impeller sleeve
10	310120	seal plate screws (4)
11	310121	Oil seal
12	310122	Seal plate
13	310123	Seal plate o-ring
14	310124	Mechanical seal
15	310125	Complete motor
16	310126	Rubber gasket
17	310127	Capacitor
18	310128	Handle
19	310129	Cable screws (2)
20	310130	Cable tie
21	310131	Power cable
22	310132	Power cable plate
23	310133	Top cover
24	310134	O-Ring
25	310135	Cover set screw



Repair parts may be ordered from your authorized point of sale or from  
**BUR-CAM PUMPS**

# TROUBLE SHOOTING GUIDE CHECKLIST

NEVER MAKE ADJUSTMENTS TO ANY ELECTRICAL APPLIANCE OR PRODUCT WITH THE POWER CONNECTED. DON'T JUST UNSCREW THE FUSE OR TRIP THE BREAKER, REMOVE THE POWER FROM THE RECEPTACLE.

TROUBLE	PROBABLE CAUSE	ACTION
Motor does not run.	Blown fuse Tripped breaker Plug disconnected Corroded plug Low water level Thermal overloaded  Defective motor	Replace Reset Re-install Clean prongs Add water and verify Unplug the pump for 15 minutes than restart. Replace/repair
Pump does not deliver full capacity.	Jammed impeller Blocked suction/inlet Discharge leak Blocked line/pipe Worn impeller Defective motor	Clean Check for debris in pit and clean Repair Check for debris or ice Repair/replace Replace/ repair

## TO THE END CONSUMER

*If you have any problems with the product, before advising the store, where you've purchased the pump, please contact us at 514 337-4415 , and ask for our sales department, and they will be pleased to help you with any questions you might have, concerning your installation.*