

MODEL **125355H** CONTROL BOX CONNECTION

2190 Dagenais Blvd. West Tel. : 514.337.4415
Laval (Quebec) Fax : 514.337.4029
Canada info@burcam.com
H7L 5X9 see us at www.burcam.com

We recommend that a licensed electrician be employed to do wiring to the pressure switch. Permanently ground the motor in accordance to the electrical codes for your area.

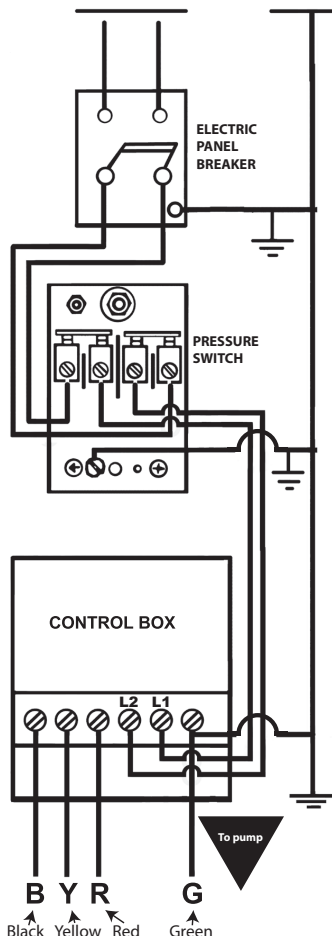
Do not use an extension cord to connect your pump to the power source. From your distribution panel to the pressure switch, install a wire gauge no smaller than 14 gauge. See the wire chart for wire length above 100'.

WIRE CHART

HP	V	GAUGE				
		14	12	10	8	6
1/2	115	100'	160'	250'	390'	620'
1/2	230	400'	650'	1020'	1610'	2510'
3/4	230	300'	480'	760'	1200'	1870'
1.0	230	250'	400'	630'	900'	1540'
1.5	230	190'	310'	480'	770'	1200'

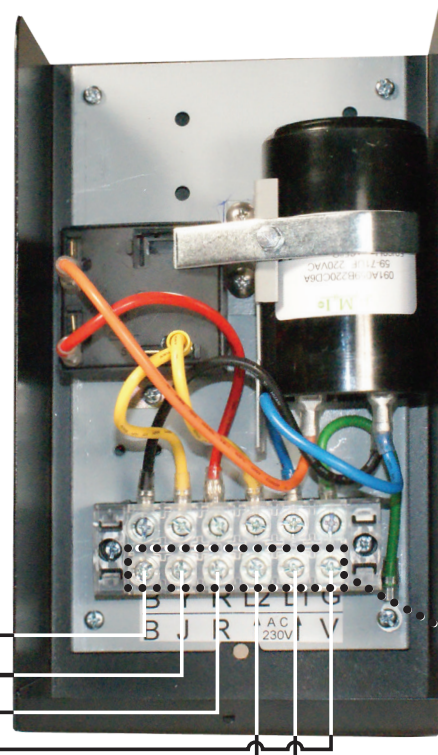
* If you need other configuration, contact us

Please read these instructions carefully. **Failure** to comply to instructions and **designed** operation of this system, may **void** the warranty.



**4 wires to
the pump
motor.**

Black
Yellow
Red
Green



**2 wires from the pressure
switch, not polarised.**

**Use this section
to connect your
wires.**

**THESE
INSTRUCTIONS
ARE VALID FOR
3 WIRE
(+ GROUND)
DEEP WELL PUMP
INSTALLATION.**