

**2** YEAR  
WARRANTY

# Utility pump **1/4 HP**

*Professional Series*

**CAPACITY: 2500 US GPH  
HEAD OF: 18' (5,5m)**

**T30319**

CAPACITY		
HEAD	US GPH	LPH
18'	550	2080
15'	1550	5875
10'	2100	7950
5'	2500	9465

*(Friction loss in pipe not included)*

## UNDERSINK SYSTEM

- » Heavy duty basin made of polyethylene resin, non corrosive 14 1/2" X 13 1/2" basin and lid.
- » 1 1/2" NPT discharge.
- » Water cooled continuous duty motor.
- » Automatic adjustable vertical switch starts motor when water enters in the basin.
- » Pump body and impeller made of Noryl.
- » Design for a permanent installation.
- » SJTW 9' cords, piggy back type.
- » 115V 60Hz motor, with automatic thermal and overload protection.



**TURBO**®

**TOUGH AND RELIABLE**

# TURBO®

## Model T30319

### UTILITY PUMP

*Professional Series*

**2 YEAR WARRANTY**



**1/4HP**  
**2500 GPH**  
**Head of**  
**18' (5,5 m)**

Discharge:  
1 1/2" NPT with  
1 1/4" NPT reducer  
Electric cables:  
9' piggyback type

- Basin made of polyethylene resin
- 14 1/2" X 13 1/2"
- Water cooled continuous duty motor
- Pump made of Noryl
- Noryl impeller
- Automatic ajustable vertical switch

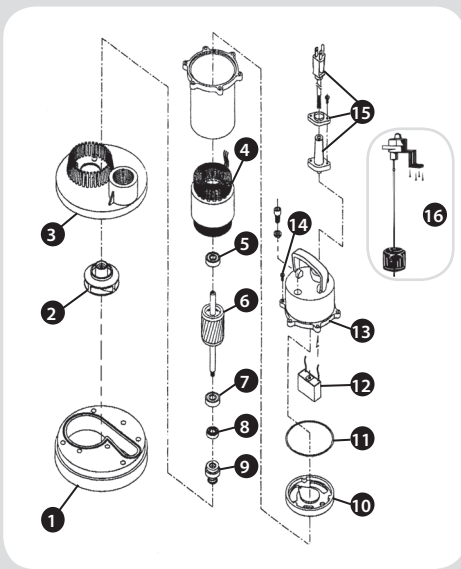
115V 60Hz  
3A, (7.5A at start)

	US GPH	LPH
5'	2500	9465
10'	2100	7950
15'	1550	5875
18'	550	2080

*Friction loss not included*

## REPAIR PARTS

REF.	PART	DESCRIPTION
1	310430	Pump volute
2	310433	Impeller
3	310434	Pump base
4	310441	Stator
5	350340	Upper bearing
6	310438	Rotor
7	350340	Lower bearing
8	310435	Oil seal
9	350126	Mechanical seal
10	310448	Bearing housing
11	310443	Pump gasket
12	310446	Capacitor
13	310449	Upper casing
14	350114	Screws (2)
15	350329	Power cable
16	450447	Vertical switch



**TO THE PROFESSIONAL OR INSTALLER:**  
Instructions must remain with installation.

### INSTALLATION

Please read these instructions carefully. Note before you proceed with the installation of this product that the manufacturer's guideline has to be respected. Failure to comply to instructions and designed operation of this product, may void the warranty. Your product has been carefully packaged at the factory to prevent damage during shipping. However, occasional damage may occur due to rough handling. Carefully inspect your product for damages that could cause failures. Report any damage to your carrier or your point of purchase.

### MONTHLY MANDATORY CHECK-UP:

- 1- Inspect the pump and the basin for any obvious condition that necessitates cleaning, correction, adjustment or repair.
- 2- Clear the basin and the surroundings of any paper, leaves or other debris that might clog the input openings. Remove anything that might float into the basin.
- 3- Assure that the pump is secure and vertical for proper operation.
- 4- Assure that there is adequate clearance from any combustible materials or structure. Stored materials must be kept away from the basin.
- 5- Assure that the motor is securely plugged into a proper 'GFCI' electrical outlet.
- 6- Test the 'GFCI' outlet by pressing its test switch. This should prove that the outlet is energized and will trip off to protect against a ground fault. Be sure to reset the 'GFCI' by pressing its reset switch.
- 7- Lift the float to prove that the pump will start when required. (Step 8 below will test submersible pumps with enclosed floats).
- 8- Put pails of water in the sump to prove that any check valve present will permit effluent to flow.
- 9- Observe that the plumbing can carry the effluent safely out of the residence.

### SAFETY INTRUCTIONS:

Before installation and operation, follow these procedures:

- A- Check with your local electrical and plumbing codes to ensure you comply with the regulations. These codes have been designed with your safety in mind. Be sure you comply with them.
- B- A separate circuit must be lead from the

home electrical distribution panel properly protected with a fuse or a circuit breaker. We also required that a ground fault circuit be used as well as a 'GFCI' receptacle. Consult a licensed electrician for all wiring.

**C-** The ground terminal on the three prong plugs should never be removed. They are supplied and designed for your protection.

**D-** Never make adjustments to any electrical appliance or product with the power connected. Do not only unscrew the fuse or trip the breaker, remove the power plug from the receptacle.

### INSTALLATION STEPS:

**STEP 1** We recommend that you install your pump in a clean and dry location where there is adequate room for servicing at a later date. Protection from freezing temperatures and good ventilation should be considered as well, to provide the pump an environment for long life. Do not use to pump gas or toxic fuels. This submersible sump pump is designed to pump water only. Locate the pump directly under the sink. Friction losses in the discharge pipe must be taken into consideration when the horizontal offset is greater than 50 feet. The discharge pipe should be increased from 1 1/2" to 2". This will reduce friction losses and allow the pump to give maximum performance. More friction losses must also be taken into consideration when many elbows and fittings are installed in the discharge line. Each elbows and fittings must be considered as 1 feet of head. The float switch of your pump has been pre-set at the factory and does not need any adjustment. Teflon tape is required for all treaded connection. **Never run the pump dry.** Damage to the seal may occur. The run of the pipe from the check valve to the existing waste or drain line must never be slooping downward except when connecting to same.

**STEP 2** Using 1 1/2" pipes and fittings, connect the sink strainer to basin intake (a P-trap is required between the strainer and the basin).

**STEP 3** Using 1 1/2" pipes and fittings, connect the pump discharge to the closest existing drain line. Install a check valve in vertical position (350362) on the discharge pipe of the pump.

**STEP 4** Using 1 1/2" pipes and fittings, connect the vent line from the basin lid to the house plumbing vent line.

**STEP 5** Connect the power cables to the electric outlet previously installed.