



SUBMERSIBLE SUMP DUPLEX SYSTEM Professional Series

Model T03828



Primary pump

2 YEAR WARRANTY

1/3HP
2400 GPH
Head of 20' (6 m)

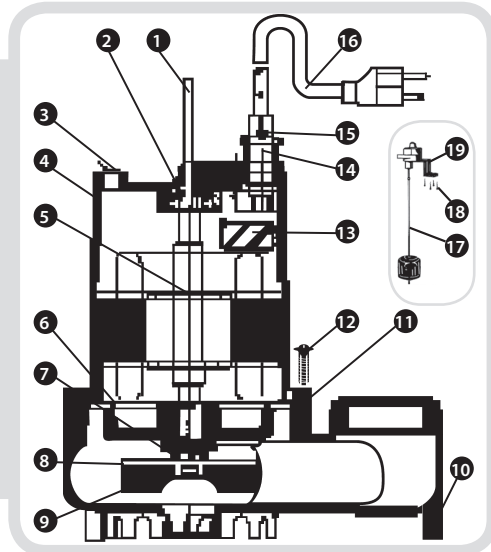
- Discharge: 1 1/2" ABS DWV pipe
Electric cable: 9' piggyback type
- Oil cooled
 - Cast iron construction primary pump
 - Operates in basin as small as 14" or larger
 - Automatic adjustable vertical switch
 - Factory installed check valves and piping for easy installation
- Primary pump 115V 60Hz
7.4A, (15A at start)

PRIMARY PUMP		
	US GPH	LPH
5'	2400	9000
10'	1600	6000
15'	900	3400
20'	300	1000

Friction loss in pipe not included

REPAIR PARTS

REF.	PART	DESCRIPTION	REF.	PART	DESCRIPTION
1	310412	Handle	11	310424	O-Ring
2	300450	Bearing	12	310423	Pump body screws (6)
3	310414	Top cover screws	13	310425	Stator assembly
4	310415	Motor casing	14	310426	Packing
5	310416	Rotor & shaft	15	310427	Cable screws
6	310418	Seal cover	16	310428	Power cable
7	350311	Oil seal	17	450447	Vertical float switch
8	310420	Mechanical seal	18	450402	Screws (4)
9	310421	Impeller	19	310411	Switch bracket
10	310422	Pump casing			



Back-up pump

2 YEAR WARRANTY

12volts
1600 GPH

- To evacuate excess of water during power outage, primary pump failure or when the volume to evacuate is above the primary pump capacity
 - 24 hours quick charging
 - Charger, battery case, float switch and check valve included
 - Marine battery not included
- 12V DC

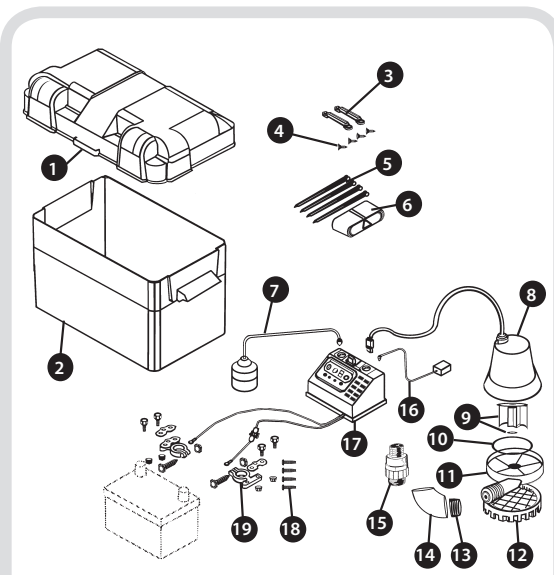
BACK-UP PUMP		
	US GPH	LPH
4'	1600	5300
8'	1200	4540
11'	1020	3860

Friction loss in pipe not included

BATTERY APPROXIMATE AUTONOMY	
7 hrs at	4' (1,5 m)
9 hrs at	8' (3 m)
10 hrs at	10' (4,5 m)

REPAIR PARTS

REF.	PART	DESCRIPTION	REF.	PART	DESCRIPTION
1	310660	Upper box cover	11	310663	Volute
2	310661	Lower box base	12	310662	Suction screen
3	310672	Alternative handles (2)	13	52259	Reducer 1"-1 1/4"
4	310667	Screws (4)	14	52258	90° elbow
5	310673	PVC ties (4)	15	350353	Check valve
6	310670	Black belt	16	310665	AC adaptor
7	310666	Float	17	310664	Control box
8	310659	Pump	18	310668	Big head screws (4)
9	310676	Impeller & lock washer	19	310671	Battery cable clamp
10	310677	Pump O-Ring			



TO THE END CONSUMER:

If you have any problems with the product, before advising the store, where you've purchased the pump, please contact us at 514 337-4415, and ask for our customer service desk. They will be pleased to help you with any questions you might have, concerning your installation.



SUBMERSIBLE SUMP DUPLEX SYSTEM Professional Series

INSTALLATION STEPS:

The emergency pump must be installed at 45° angle to prevent airlock into the pump body.

- STEP 1** Attach the float switch to the back-up pump discharge pipe using the enclosed tie-wrap, as per picture 1. The standby pump's float switch should be installed so that it will not activate until standby pump's inlet is under water. Make sure power wires do not interfere with float switch or pump inlet.
- STEP 2** Place battery box within 3 feet of the sump and install a 115V AC separately fused outlet within 5 feet of the control box. The electrical outlet must be protected by a ground fault circuit interrupter (GFCI). The area must be also clean, dry and well ventilated.
- STEP 3** Fix the control box to the battery box.
- STEP 4** Plug the float switch, pump and charger to the appropriate connector as per picture 2. Test pump operation by filling the sump with water while the main pump is unplugged. If the pump operates properly, plug the charger into the GFCI protected outlet to keep the battery charged.
- STEP 5** Protect electrical cord from sharp objects, hot surfaces, oil and chemicals. Avoid kinking the cord and replace damaged components immediately.



The control box contains a multi-colored indicator lights.

- 1- The green charged light indicates a full charge.
- 2- The red battery low light indicates a low voltage.
- 3- The yellow charging light indicates a charge function in progress.
- 4- The red reversed light indicates a reverse connection on the batterie cables.
- 5- The alarm selector can be put in on or off position as per your choice. If the alarm turns on, the red alarm light will turn on.
- 6- To test the pump operation, push the pump test button.
- 7- To stop the alarm, if in on position, push the reset button.

Note that if activated, the alarm will turn on as soon as the pump turns on. This will warn you that the pump turned on due to a power failure or a primary pump failure.

TROUBLE SHOOTING GUIDE CHECKLIST (BACK-UP PUMP):

	PROBABLE CAUSE	ACTION
Pump won't run	Connections not secure. Low or defective battery. Float switch unable to swing up and down as needed. Defective or blown fuse.	Check all connections. Check battery and replace if low or defective. Check that float switch tether is long enough to allow pump to operate. Check the internal fuse located inside the control box. Pull the charger from the wall outlet and remove. If fuse is blown, replace it with a 15A automotive type fuse.
Motors hums but pumps won't run	Defective battery. Impeller is locked.	Check battery and replace if low or defective. Unplug pump and check to see if impeller is free to turn. If impeller is locked, remove the 4 screws on the bottom of the pump to release the housing around the impeller. Remove the obstructions. Reassemble pump and reconnect.
Pump runs but pumps very little or no water	Check valve missing or improperly installed Obstruction in discharge pipe. Pump not rotated 45°. Pump air locked. Discharge pipe length and/or height exceeds capacity of pump. Low or defective battery.	Check to make sure a check valve is installed and functioning between primary pump discharge and emergency sump pump elbow fitting. Check for obstruction and clear if necessary. Check that pump is rotated 45° in elbow fitting. Pump is not install at 45° angle. Clean out to hole and replace cover. If the discharge is too high, a separate line may be required with a lower discharge height. Check battery and replace if low or defective.
Pump cycles too frequently	Tether length too short on float switch. Main check valve located between the discharge of the primary pump and the emergency pump elbow fitting or the emergency pump check valve not installed or working properly.	Tether length should be at least 2" (5,1 cm). Adjust if necessary. CAUTION: Ensure tether will swing freely without obstruction. Install check valve or repair as required.