

TURBO®

Model T03721

CONVERTIBLE JET PUMP

Professional Series

2 YEAR WARRANTY

3/4HP

950 GPH

Suction: 1 1/4"
 Discharge: 1" NPT
 Maximum pressure: 85 PSI



Suction lift
 Head of
 25' (7.5m)
 in shallow
 well mode

US GPH LPH

5'	950	3590
10'	855	3230
15'	710	2680
20'	510	1925
25'	345	1300

Friction loss not included



Suction lift
 Head of
 80' (24m)
 in deep well
 mode

US GPH LPH

30'	750	2830
40'	670	2530
50'	575	2170
60'	460	1740
70'	345	1300
80'	230	870

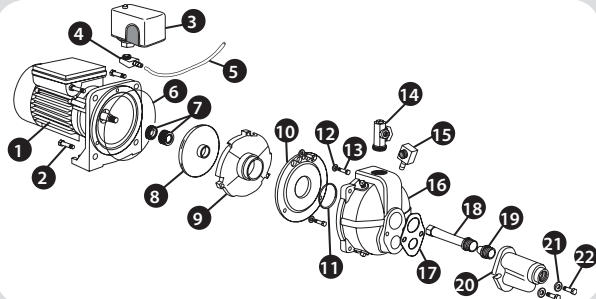
Friction loss not included

- Totally enclosed fan cooled motor, bearing to bearing
- Designed for intermediate or continuous operation
- Easy to prime due to its design and its large pump body
- Full time running capacitor, to eliminate starting wear
- External ejector
- Stainless steel shaft and mechanical seal
- Long life and high performance Noryl impeller

115/230V 60Hz
 115V = 8.9A (15A at start)
 230V = 4.5A (7.5A at start)

REPAIR PARTS

REF.	PART	DESCRIPTION
1	510054.1	Motor
2	510055	Motor screws (4)
3	7509575	Pressure switch
4	510056	1/4" NPT 1/4" barb elbow
5	750748	Hose
6	510053	Seal plate "O" ring
7	510052	Mechanical seal
8	510048	Impeller
9	510047	Diffuser
10	510065	Diffuser plate
11	510051	Diffuser plate "O" ring
12	510050	Diffuser plate washers (3)
13	510049	Diffuser plate screws (3)
14	510072	Flow regulator
15	510056	1/4" NPT 1/4" barb elbow
16	510058	Pump body
17	510061	Ejector gasket
18.1	510066.1	Short venturi
18.2	510066.2	Long venturi (25'-60')
18.3	510066.3	Long venturi (60'-80')
19	510070	Nozzle
20	510062	Ejector body
21	510063	Washers (2)
22	510064	Ejector cap screws (2)
23	750968	1/8" pressure gauge (not shown)



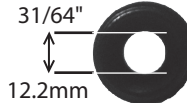
VENTURIS

Your ejector is factory pre-assembled with the venturi 510066.2, for an optimum performance when the pumping level is between 25' to 60' (7.5 meters to 18 meters) depth, in reference to the pump position. So, this is a deep well application mode. The ejector is positioned into the well and is connected to the pump using 2 pipes. If the pumping level is deeper than 60' (18 meters) in reference to the pump position, it is mandatory to unscrew the pre-assembled venturi and to replace it by the venturi 510066.3, also as a deep well mode application with the ejector positioned into the well. In the case of a pumping level lower than 25' (7.5 meters), unscrew the pre-assembled venturi and replace it by the venturi 510066.1. Then screw the ejector to the pump body. This becomes a shallow well mode application where only one pipe is required to pump water.

For shallow well application mode



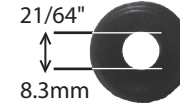
510066.1



Factory pre-assembled, for deep well application mode, 25' to 60'



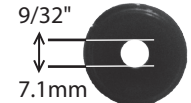
510066.2



For deep well application mode, 60' to 80'



510066.3



VALVE CONTROL

Use the included flow control valve to connect your pump to your home plumbing distribution pipe system. Install this valve to the pump discharge and close the valve completely by turning the top screw clockwise. Then, turn the screw counter-clockwise for one turn only and proceed to the following priming process of the pump. Follow all these inside step by step instructions to install your pump. Use teflon tape on all threads.

- 1- Install the pump discharge fittings as illustrated.
- 2- Fill the suction line with water and connect it to the suction inlet.
- 3- Remove the priming plug and fill the pump body with water.
- 4- Screw the plug to the priming inlet.
- 5- Turn the power on. The pump should deliver water to the plumbing line within 30 seconds. If not, unplug the pump and repeat the process at step 3.

After priming the pump, you can adjust the flow control valve to obtain the best performance of the pump. Remember that when you open this valve, you reduce the suction capacity. This valve is used to balance the discharge flow with the suction requirement. The deeper your suction distance, the more closed the valve should be for optimum performance.

