

TURBO[®]

LAUNDRY PUMP *Professionnal Series*

Models

T00315 T00514

2 YEAR WARRANTY



Manual



Automatic

1/3HP

1400 GPH

Head of 10' (3 m)

Discharge: 1 1/4" NPT

Electric cable: 9'

(piggyback type on automatic version)

- Pump body made of Noryl
- Allows sink installation without breaking concrete
- No vent connection required
- Maximum water temperature 140°F (60°C)
- Fits under wet bars, kitchenettes, vanities and utility sinks. Complete self-contained unit
- Do not need "P" trap

115V 60Hz

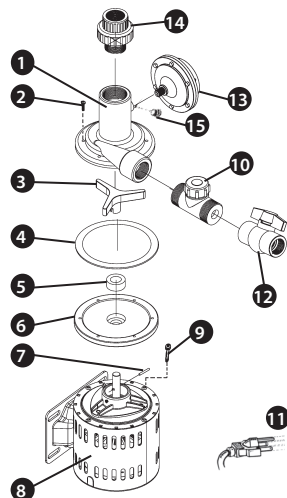
US GPH LPH

2'	1400	5300
4'	1200	4550
6'	1020	3850
8'	800	3000
10'	500	1900

Friction loss in pipe not included

REPAIR PARTS

REF. PART	DESCRIPTION	REF. PART	DESCRIPTION
1	310530	Volute	<u>FOR AUTOMATIC VERSION ONLY</u>
2	310351	Volute screws (6)	12 52279 Ball valve
3	310529	Impeller	13 310532 Diaphragm switch
4	310528	Pump gasket	14 52261 Union
5	400459	Lip seal	<u>FOR MANUAL VERSION ONLY</u>
6	310527	Volute cover	15 52212 Brass plug 1/4" NPT
7	310526	Pin	
8	310525	Electric motor complet	
9	310534	Screws (3)	
10	310533	Ball check valve	
11	300280	Power cable	



NOTICE:

This unit have been designed to pump water only. This unit is not designed for applications involving salt water, brine or any other liquids including petroleum products. Use with salt, brine or any other liquids including petroleum products will void the warranty.

TURBO

©

TO THE PROFESSIONAL OR INSTALLER:
Instructions must remain with installation.

GENERAL LAUNDRY TUB PUMP INSTALLATION

Please read these instructions carefully. Note before you proceed with the installation of this product that the manufacturer's guideline has to be respected. Failure to comply to instructions and designed operation of this product, may void the warranty.

Your product has been carefully packaged at the factory to prevent damage during shipping. However, occasional damage may occur due to rough handling. Carefully inspect your product for damages that could cause failures. Report any damage to your carrier or your point of purchase.

MONTHLY MANDATORY CHECK-UP:

- 1- Inspect the pump and the laundry tub for any obvious condition that necessitates cleaning, correction, adjustment or repair.
- 2- Clear the laundry tub and the surroundings of any paper, leaves or other debris that might clog the strainer openings. Remove anything that might fall into the pump.
- 3- Assure that the pump is secure and vertical for proper operation. The manual operated pump version may be horizontal.
- 4- Assure that there is adequate clearance from any combustible materials or structure. Stored materials must be kept away from the pump. Shelves or cabinet structures must not be in close proximity over the pump.
- 5- Assure that the motor is securely plugged into a proper 'GFCI' electrical outlet.
- 6- Test the 'GFCI' outlet by pressing its test switch. This should prove that the outlet is energized and will trip off to protect against a ground fault. Be sure to reset the 'GFCI' by pressing its reset switch.
- 7- Put pails of water in the laundry tub to prove

that any check valve present will permit effluent to flow.

- 8- Observe that the plumbing can carry the effluent safely out of the residence.

SAFETY INSTRUCTIONS:

Before installation and operation, follow these procedures:

- A- Check with your local electrical and plumbing codes to ensure you comply with the regulations. These codes have been designed with your safety in mind. Be sure you comply with them.
- B- A separate circuit must be lead from the home electrical distribution panel properly protected with a fuse or a circuit breaker. We also required that a ground fault circuit be used as well as a 'GFCI' receptacle. Consult a licensed electrician for all wiring.
- C- The ground terminal on the three prong plugs should never be removed. They are supplied and designed for your protection.
- D- Never make adjustments to any electrical appliance or product with the power connected. Do not only unscrew the fuse or trip the breaker, remove the power plug from the receptacle.

IMPORTANT

ELECTRICAL CONNECTION:

For pumping systems using more than one pump, each pump needs to be connected to a separate dedicated circuit protected by a fuse or breaker. This way, the power supply of one pump will not stop operating if the fuse of one of the pumps burns or if the breaker of one of the pumps trips.

IMPORTANT NOTICE:

Pump selection, proper and adequate installation are a must to comply with local by-laws and need to be adhered to.

INSTALLATION STEPS:

STEP 1

We recommend that you install your pump in a clean and dry location where there is adequate room for servicing at a later date. Protection from freezing temperatures and

good ventilation should be considered as well, to provide the pump an environment for long life. Locate the pump directly under the strainer of laundry tub or sink as per installation diagram. Friction losses in the discharge pipe must be taken into consideration when many elbows and fittings are installed in the discharge line. Each elbows and fittings must be considered as 1 feet of head. **Never run the pump dry. Damage to the seal may occur.** The run of the pipe from the check valve to the existing waste or drain line must never be sloping downward except when connecting to same.

STEP 2

Using teflon tape, install the female portion of the union under the laundry tub to the threaded male adaptor of the strainer and screw the male part of the union, into the female pump intake. Then screw the union to hold the pump securely in place.

Note: Never install a "P" trap with our laundry tub pump.

STEP 3

Using teflon tape, screw the check valve to the 1" pump discharge and aligned towards the planned discharge line.

STEP 4

(This step for automatic version only)
Also using teflon tape, screw the supplied ball valve to the other end of the check valve.

STEP 5

From this point, run your length of discharge pipe, using elbows and fittings, in your shortest possible run to the existing waste or drain line.

STEP 6

(This step for automatic version only)
Connect the 3 prong plug of the switch in a receptacle. Insert the motor 3 prong plug into female receptacle on exposed piggy-back of switch plug.

STEP 7

(This step for manual version only)
Test pump operation by filling laundry tub with water. Connect the 3 prong plug (never run the pump dry) in a receptacle to activate the pump motor. Check all plumbing connections for leaks and correct where necessary.

Important notice: The electrical outlet must

be activated by a wall switch.

STEP 8

(This step for manual version only)
Unplug (turn off wall switch) to stop the motor.

STEP 9

(This step for automatic version only)
Test pump operation by filling laundry tub with water. Check all plumbing connections for leaks and correct where necessary. The switch will activate the pump's motor and shut off when water will be drained out by the pump action.

STEP 10

(This step for automatic version only)
The laundry pump capacity is greater than the gravity inlet flow, causing the pump to cycle "on-off". Upon this occurs, reduce the discharge flow with the ball valve to adjust with the gravity flow at pump inlet, to maintain a constant flow.

For installation on a twin laundry tub, the pump has to be centered. After installation of the connecting pipe, follow the installation steps.

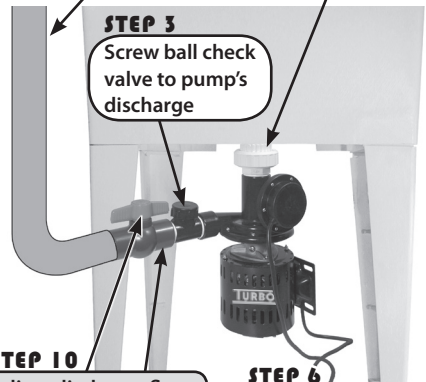
LAUNDRY TUB APPLICATION FOR AUTOMATIC PUMP:

STEP 5

Run the discharge pipe.

STEP 2

Using the supplied union, install pump under strainer.



STEP 3

Screw ball check valve to pump's discharge

STEP 10

Adjust discharge flow.

STEP 4

Screw ball valve to the check valve.

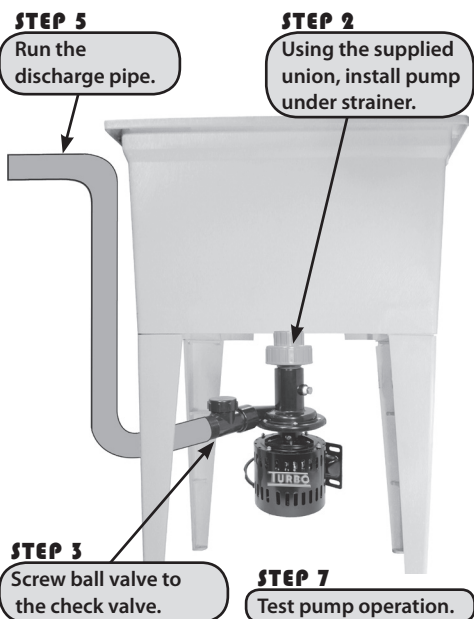
STEP 7

Test pump operation.

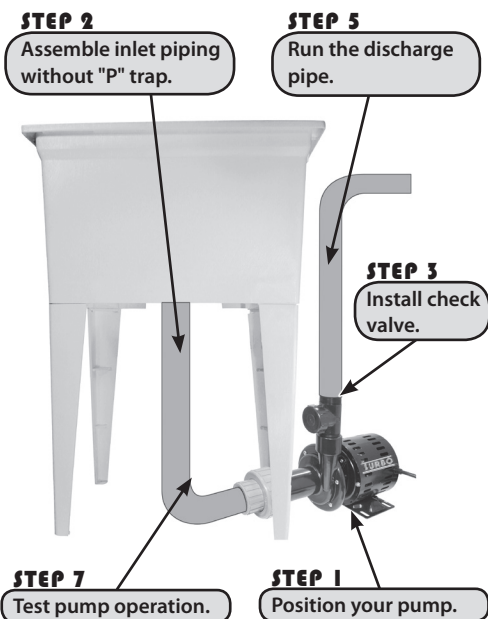
STEP 6

GFCI plug type
Connect switch and pump to receptacle.

LAUNDRY TUB APPLICATION FOR MANUAL PUMP ON VERTICAL POSITION:



LAUNDRY TUB APPLICATION FOR MANUAL PUMP ON HORIZONTAL POSITION:



TROUBLE SHOOTING GUIDE CHECK LIST

	PROBABLE CAUSE	ACTION
Motor does not run	Switch is off position Blown fuse Tripped breaker Switch port clogged Defective switch Defective motor	Turn switch to on position Replace Reset Remove and clean switch, port, adaptor Replace Replace
Motor runs but no water is delivered	Improper voltage "P" trap between strainer and pump	Check voltage Remove
Pump does not deliver to full capacity	Improper voltage "P" trap between strainer and pump	Check voltage Remove
Pump does not shut off	Defective switch Air in suction line Missing check valve Clogged check valve in open position	Replace Check for proper pipe slope to pump inlet Install valve Clean debris
Pump start and stop too often	Defective switch Pump discharge too fast on low head Water pumped faster than tub is filled	Replace Install ball valve in discharge line to reduce flow rate It is normal

TO THE END CONSUMER:

If you have any problem with the product, before advising the store, where you've purchased the pump, please contact us at 514 337-4415, and ask for our customer service desk. They will be pleased to help you with any questions you might have, concerning your installation.