

TURBO®

Model T00507

UTILITY PUMP

Professional Series

2 YEAR WARRANTY



1/4HP
1200 GPH
Head of 15' (4.5m)

Suction: Bottom suction to 1/8" depth
Discharge: 1" NPT, garden hose adaptor, 3/4" and 1/2" barb
Electric cable: 9'

- Water cooled
- Noryl construction

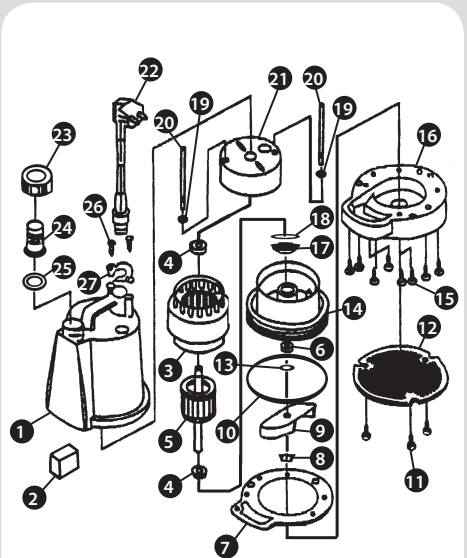
115V 60Hz
2.2A, (5A at start)

	US GPH	LPH
5'	1200	4550
10'	1000	3750
15'	800	3000

Friction loss not included

REPAIR PARTS

REF.	PART	DESCRIPTION
1	300449	Pump body
2	300462	Capacitor
3	300447	Stator
4	300450	Bearing
5	300446	Rotor shaft
6	300445	Mechanical seal
7	300454	Motor support
8	300453	Impeller nut
9	300444	Impeller
10	300452	O-ring
11	300463	Strainer screws (3)
12	300443	Strainer
13	300470	Washer mechanical seal
14	300451	Motor bottom housing
15	300458	Base screws (5)
16	300455	Base
17	300471	Oil seal
18	300472	Oil seal washer
19	300464	Spring
20	300465	Long shaft
21	300448	Motor top housing
22	300442N	Power cable
23	300461	Nut
24	300460	Male adaptor 3/4"
25	300459	Washer
26	300463	Power cable screws (2)
27	300456	Clamp



TOUGH AND RELIABLE

TO THE PROFESSIONAL OR INSTALLER:
Instructions must remain with installation.

INSTALLATION

Please read these instructions carefully. Note before you proceed with the installation of this product that the manufacturer's guideline has to be respected. Failure to comply to instructions and designed operation of this product, may void the warranty.

Your product has been carefully packaged at the factory to prevent damage during shipping. However, occasional damage may occur due to rough handling. Carefully inspect your product for damages that could cause failures. Report any damage to your carrier or your point of purchase.

MONTHLY MANDATORY CHECK-UP:

- 1- Inspect the pump and the water container for any obvious condition that necessitates cleaning, correction, adjustment or repair.
- 2- Clear the container and the surroundings of any paper, leaves or other debris that might clog the input openings. Remove anything that might float into the container.
- 3- Assure that the pump is secure and vertical for proper operation.
- 4- Assure that there is adequate clearance from any combustible materials or structure. Stored materials must be kept away from the container.
- 5- Assure that the motor is securely plugged into a proper 'GFCI' electrical outlet.
- 6- Test the 'GFCI' outlet by pressing its test switch. This should prove that the outlet is energized and will trip off to protect against a ground fault. Be sure to reset the 'GFCI' by pressing its reset switch.
- 7- Observe that the plumbing can carry the water safely out of the container.

SAFETY INTRUCTIONS:

Before installation and operation, follow these procedures:

A- Check with your local electrical and plumbing codes to ensure you comply with the regulations. These codes have been designed with your safety in mind. Be sure you comply with them.

B- A separate circuit must be lead from the home electrical distribution panel properly protected with a fuse or a circuit breaker. We also required that a ground fault circuit be used as well as a 'GFCI' receptacle. Consult

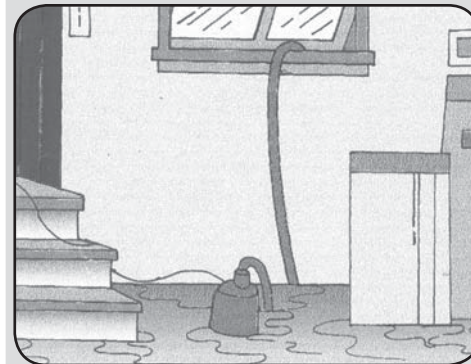
a licensed electrician for all wiring.

C- The ground terminal on the three prong plugs should never be removed. They are supplied and designed for your protection.

D- Never make adjustments to any electrical appliance or product with the power connected. Do not only unscrew the fuse or trip the breaker, remove the power plug from the receptacle.

TYPICAL INSTALLATION:

TO DRAIN FLOODED BASEMENT



TO DRAIN POOL AND POOL COVER



TO DRAIN SPA

